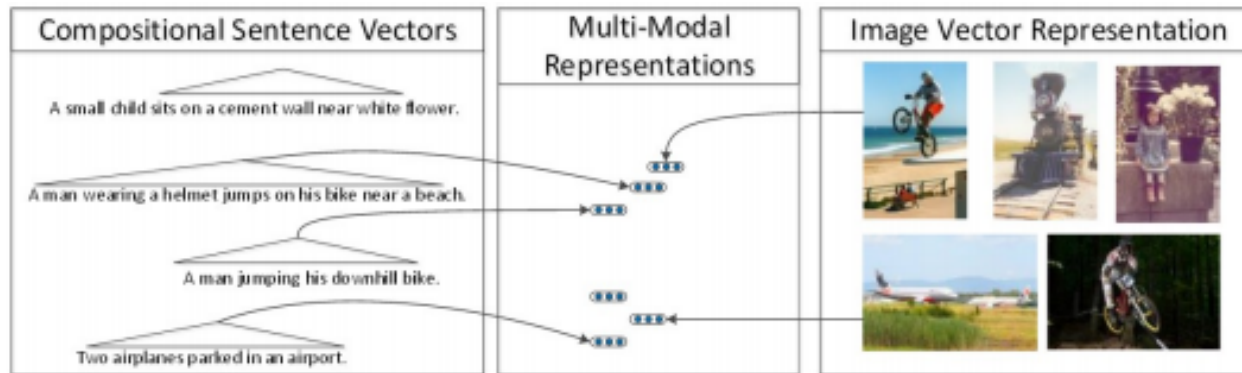
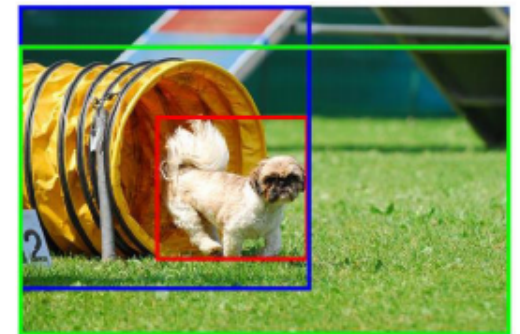


Multimodal Text Grounding



- Ground text to real world objects and entities
- Extract (space) relation of objects and entities
- Deep-learning for multimodal (text/images) representations
- Semantics of texts
- **Profile:** Computer Scientist
- **Team:** Oier, Aitor, Eneko



A little brown and white dog emerges from a yellow collapsible toy tunnel onto the lawn.